

Lesson Plan & Worksheets

# PAWS in JOBLAND

Grades 3 - 5



**BRIDGES**  
Explore • Plan • Achieve

Paws in Jobland is a trademark of Studie og Erhverv International ApS, used under licence by Bridges Transitions Inc. Bridges and designs are registered and unregistered trademarks of Bridges Transitions Inc.

Copyright © 2006 Bridges Transitions Inc. All rights reserved

## Lesson Plan 29 - Jobs and the Environment



**Pairs activity:** 20-30 minutes.

### Learning objectives:

- To develop an awareness and understanding of environmental issues
- To help develop reasoning and research skills; to be able to use IT information resources

**Curriculum links:** Geography and Science  
– how actions of humans affect the environment;  
Technology – database exploration.

### Resources needed/preparation:

- Photocopy of Worksheet 29
- Writing materials

**Background:** The environment is an issue discussed at all levels, from children on the playground to politicians in government offices. There are several jobs highlighted in Paws in Jobland that require an awareness of environmental issues. It could be that the activities that are part of a job are potentially damaging to the environment. There are other jobs with aims of improving the environment, or solving problems caused by damage in the past. This worksheet activity helps to focus on how people can help minimize environmental problems through what they do in their work.

### Introduction/guidelines for students:

- Ask the class what they understand by "the environment". They might highlight issues such as pollution, buildings or farm land. They may also mention issues such as climate change or air and water quality.
- Ask the students if they know of any jobs people do that involve looking after the environment. Also ask if they can think of any types of jobs or activities that would damage the environment.
- You could encourage the class to brainstorm to help get ideas and opinions aired. Dividing the blackboard into two sides, highlighting positive and negative, will help to make the issues clear.
- Ask the class if they can think of ways of improving on the negatives, such as more information being made available, more efficient energy use, fines and taxes on pollution, etc.
- Arrange the class into pairs. Hand each pair a worksheet and allow them time to look in Paws in Jobland at the listed jobs. They can then decide if the person doing each of the jobs is having (or has the potential to have) a positive or negative effect on the environment.

### Ideas for further development:

- More able students could do the worksheet individually.
- You could highlight other jobs for students to look into.

### Ideas for making the activity easier:

- The activity could be done in small groups rather than pairs.
- You could complete the first row (architect) before you photocopy the worksheet.

### Display ideas:

There is a wide scope for displays on an environmental theme. Children could produce environmental awareness posters similar to the pictures on the worksheet. You could have a recycling corner to which children bring recyclable items. Samples of recycled products could be displayed.

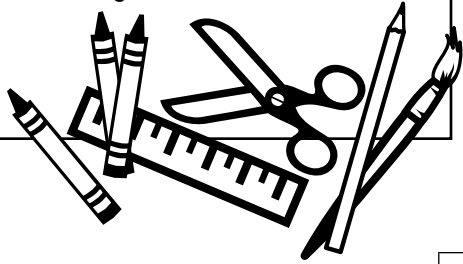


# Worksheet 29 - Jobs and the Environment

My Name: \_\_\_\_\_ Date: \_\_\_\_\_

**Materials/Resources Needed:**

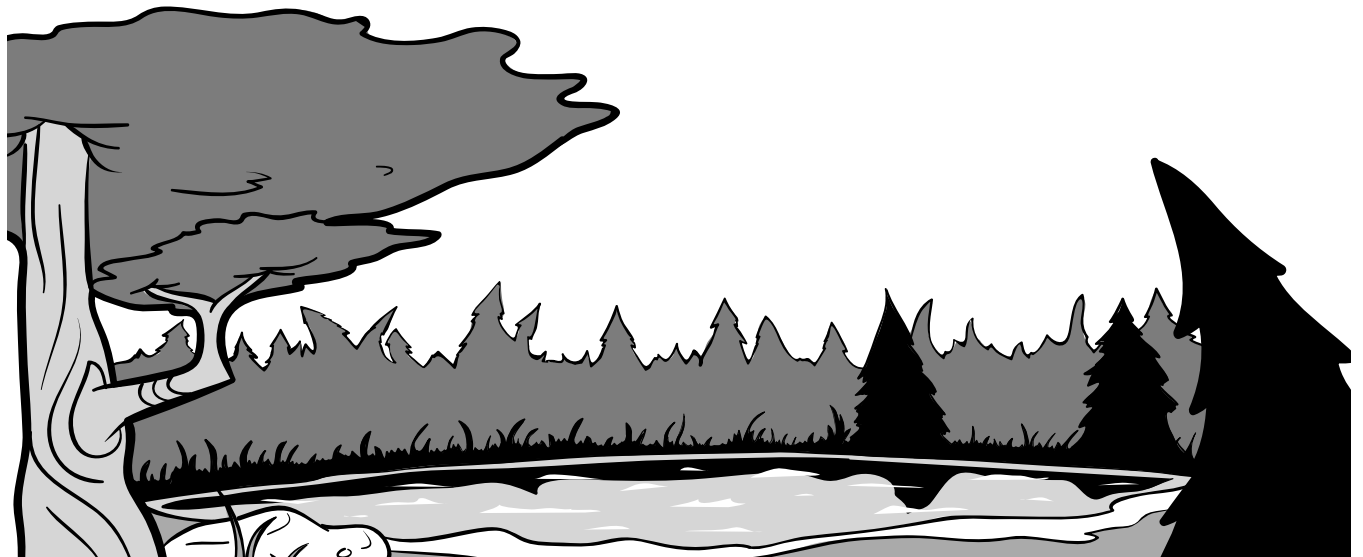
- Photocopies of Worksheet 29
- Writing materials



Look at each of these jobs using library resources or Paws in Jobland. **Think about the effect they have, or could have on the environment.**

If you think the job has a good, or positive effect, say why.  
If you think the job has a bad, or negative effect, say why.  
Some jobs may have both positive and negative effects. Look at each of these jobs in Paws in Jobland.

	Positive	Negative
Architect		
Bus Driver		
Fish Farm Worker		
Journalist		
Meteorologist		
Refuse Collector		
Scientist		





**Bridges Transitions Inc. 200 - 1628 Dickson Ave. Kelowna, BC V1Y 9X1  
1-800-281-1168 [www.bridges.ca](http://www.bridges.ca) [tech-support@bridges.com](mailto:tech-support@bridges.com)**

Paws in Jobland is a trademark of Studie og Erhverv International ApS and is used under licence by  
Bridges Transitions Inc. Bridges and designs are trademarks of Bridges Transitions Inc.

Copyright © 2006 Bridges Transitions Inc. All rights reserved.