

Lesson Plans & Worksheets

PAWS IN JOBLAND

Grades 3 - 5





Lesson Plan 25 - People in our School

Group activity

Learning objectives:

- To develop research skills; to learn about your environment
- To draw a plan of a familiar site

Curriculum links: English, Geography – plan drawing, Technology (if using a tape recorder for interviews).

Resources needed/preparation:

- Photocopies of Worksheet 25
- Access to some areas of the school
- Writing materials
- Tape recorders (optional)

Background: The school is a good example of how different jobs exist in one location. This activity gives students an opportunity to look in some depth at all the functions in the school, giving them an idea of what work involves in general.

Introduction/guidelines for students:

- Ask the children to come up with a list of the jobs that exist in and around the school. They will probably think of teacher, lunchtime or playground supervisor, caretaker, principal, crossing guard, secretary – you may have other jobs in your school like classroom assistant, librarian or landscape gardener.
- Once you have a list of all the jobs the children have come up with, get them to produce a rough outline map of the school (or you could provide this for them). Ask them to locate on the map where each job takes place.
- Divide the class into groups. Allocate a job to each group and (if appropriate) arrange for them to "interview" the person to find out what he or she does. They could use a tape recorder to do this, or take notes.
- Each group could present their job to the rest of the class.

Ideas for further development:

- Invite one or more of the people on the list to give a class talk about what they do.
- Pick one or more of the jobs and ask students to perform one of the tasks in that job, e.g. take part of a lesson, type a letter to parents, clean up their table after lunch.

Ideas for making the activity easier:

- You could choose just one job to ask the whole class to investigate as above.

Display ideas:

Quotes from the interviews and a plan of the school, combined with photos and/or drawings of the people who do the jobs, would make a good display entitled Jobs in our School.

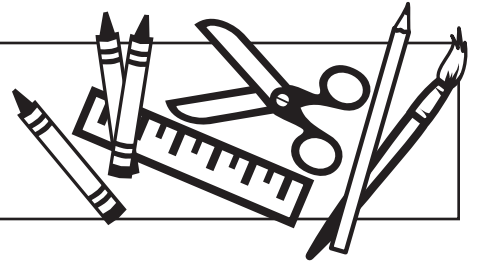


Worksheet 25 - People in our School

My Name: _____ Date: _____

Materials/Resources Needed:

- Photocopies of Worksheet 25
- Access to some areas of the school
- Writing Materials
- Tape recorder (optional)



1 Think about the people who work at school. How many different jobs are there? List them here:

3 Pick one of the jobs and interview someone who does that job.

Ask them questions like:

- What do they do every day?
- How long do they work?
- What do they like about their job?
- What don't they like about their job?

Can you think of any more questions you could ask?

2 Draw a plan of the school, showing all the places jobs are done. Write on the plan where the jobs take place. You may need to look around the school to find out!

4 Make a note of their answers. Then you can tell the class about the rest of the job.



Bridges Transitions Inc. Suite 205 - 1726 Dolphin Ave. Kelowna, BC V1Y 9R6
1-800-281-1168 • www.bridges.ca • tech-support@xap.com

Paws in Jobland is a trademark of Studie og Erhverv International ApS, used under licence by Bridges Transitions Inc.
Bridges and designs are registered and unregistered trademarks of Bridges Transitions Inc.
Copyright © 2012 Bridges Transitions Inc., a Xap Corporation company. All rights reserved.