

Lesson Plans & Worksheets

PAWS IN JOBLAND

Grades 3 - 5





Lesson Plan 1 - Getting to Know Paws in Jobland

Individual activity

Learning objectives:

- To learn about the four features of Paws in Jobland, explore career interests and learn how to find career information

Curriculum links: Art, Career Exploration, Technology – database exploration.

Resources needed/preparation:

- Photocopies of Worksheet 1
- Writing materials
- Crayons/fiber-tip pens

Background: Paws in Jobland is a program that allows the student the freedom to browse through occupations that interest them. Learning and exploration are self-paced. Worksheet 1 encourages students to interact with the computer program while it introduces them to the features of the program and the occupations available.

Introduction/guidelines for students:

- Students may feel comfortable using Paws in Jobland without guidance. However, for those who are less familiar with computers, the activities on this worksheet will help them to feel successful immediately.
- The worksheet could be used to introduce the program in one session or lesson by lesson, allocating a certain amount of time to each of the three activities.
- Introduce the students to Paws in Jobland. A witty (or so he thinks) dog called Paws gives you a tour of Jobland and introduces you to the four main sections. The four sections of the program are as follows:
- Jobland is the main section of the program. There are 20 clusters/areas in Jobland. Each area contains a number of jobs. There are five or six photographs illustrating each job, and each has a soundtrack/written commentary describing how that job is done.
- Job Finder uses a simple process to match students' interests with the Jobland areas. The student answers a series of questions. Once all the questions have been answered, the program highlights the areas of Jobland that contain jobs that might interest the student.
- The Quiz is a fun way of consolidating what has been learned while using the program.
- ABC Search is an alphabetical listing to give students easy access to all of the job listings and information.

Ideas for further development:

- Activity one: Pick another letter, or several letters, so that students become comfortable with using the ABC Search.
- Activity two: Have the students work in pairs and discuss the differences or similarities in the outcome (suggested job areas) for each student.
- Activity three: Find pictures of jobs from newspapers or magazines to stick onto bristol board and cut into jigsaw puzzle pieces. Pairs or groups of students could swap jigsaw pieces and have a race to see who can put the jigsaw puzzle together the fastest.

Ideas for making the activity easier:

- Some students might need further assistance with finding their way around the program. You may need to show them in groups before they use the computer on their own.

Display ideas:

Ask students to make a poster advertising Paws in Jobland. This will encourage other students in the school to use it. Pin up some of the drawings generated by this worksheet's first activity around the poster.

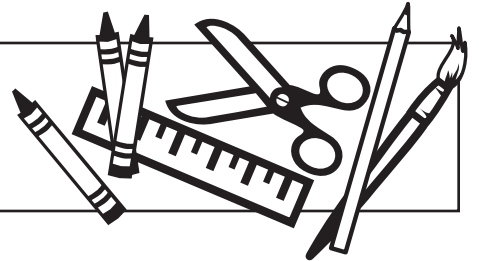


Worksheet 1 - Getting to Know Paws in Jobland

My Name: _____ Date: _____

Materials/Resources Needed:

- Photocopies of Worksheet 1
- Writing Materials
- Crayons and fiber-tip pens



Activity 1: Using **ABC Search**

- Click ABC Search in the Paws in Jobland menu.
- Click the letter B.
- Choose a job that you like and click it.
- The person who does that job will tell you all about it.
- Exit Paws in Jobland and draw a picture of the job.



Activity 2: Using **Job Finder**

- Click Job Finder in the Paws in Jobland menu.
- Answer all the questions.
- Paws will choose some areas of Jobland for you.
- These are the areas of work Paws thinks you might enjoy.
- Paws uses your answers to work out which areas of work to show you.
- Look at all the areas highlighted.
- Pick the job that you like best from all of those areas.



Activity 3: Using the **Quiz**

- Click Quiz in the Paws in Jobland menu.
- Paws will tell you how to answer the questions that are hidden in the drawers. If you get a wrong answer, you can open the drawer again and try a different question.
- If you like, you can time yourself to see how quickly you do the Quiz. Before you start, look at a clock or watch and make a note of the time. Look again when you have finished. How much time did it take?
- Make sure you include the time it took to do the picture puzzle at the end!



Bridges Transitions Co. 33637-B Hwy 97 N, Oroville, WA 98844
1-800-281-1168 www.bridges.com tech-support@bridges.com

Paws in Jobland is a trademark of Studie og Erhverv International ApS and is used under license by Bridges Transitions Co. Bridges and designs are trademarks of Bridges Transitions Inc., used under license by Bridges Transitions Co.
Copyright © 2008 Bridges Transitions Inc. All rights reserved.